

Colligo Marine®

Rigging reduced to its elegant essentials™

Introducing the ELHF, Extra
Lightweight Headsail Furling
System.



-Colligo Dux Synthetic
Standing Rigging

-Code and Spinnaker Furlers

-Torque Lines and Clamps

-Other Really Cool Stuff

Colligomarine.com

001.480.703.3675

1165 Highland Way

Grover Beach, CA 93433

Info@colligomarine.com

2016 Catalog

© 2015 Colligo Marine, LLC

Colligo Dux Synthetic Standing Rigging

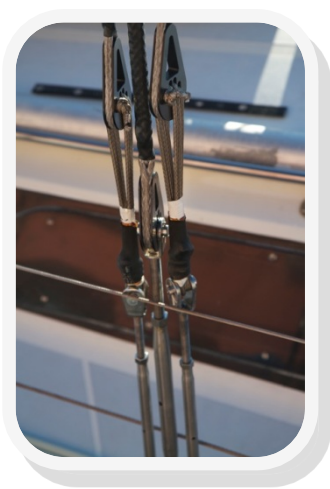
The best Synthetic Standing Rigging option for many reasons.

1. 1/4 to 1/5 the weight of steel systems.
2. The **Safest** standing rigging system, fully inspectable with visible failure mode cues. When sized by our methods the rig is 2-5 times stronger than wire or rod rigging providing a much larger factor of safety.
3. **Best UV resistance**, uncovered, predicted 5-8 years life in the tropics now and will probably get better as more data comes in.
4. **Lowest Cost** as it is generally 1-1.5 times the cost of wire.
5. Very do it yourself friendly, easily spliceable and replaceable.

We make shrouds and stays to 90 feet that are sized for equivalent stretch and to virtually eliminate creep issues.



Split backstay



Pin or Lash to Turnbuckles



Inner Forestay with Snapshackle distributor.



Turnbuckle Tensioning Systems



Bobstay with line terminator cleat.



Lifelines



Diamond Stays on Masts

Luff line and Code Style Furlers

Furler	Safe Working Load	Bearings Drive End	Drive Diameter	Drive line Dia.
CF1.5	3000	Torlon- Serviceable	112 mm (4.4")	8 mm
CN3	3000	Double Row Sealed	160 (6.3")	8 mm
CN5	7000	Double Row Sealed	185 (7.3")	8 mm

Luff line furlers offer the simplest method for handling headsails. Our continuous line luff furlers are designed for headsails such as gennakers, screechers, code zeros or even staysails. Just roll them up and drop them down.

Colligo furlers are designed for long life, and ease of use.

Our CN3 and CN5 furlers use sealed angular contact bearings in a sealed environment for redundant protection.

Our new CF Furlers use Torlon bearings in a maintenance free, sealed environment, that allow for disassembly and cleaning, if circumstances dictate, and are very lightweight.

All of our upper swivels are sealed and use either Torlon® or ceramic ball bearings and can be disassembled for maintenance if needed.

2/1 Haulout option Available.

Snapshackle option available.

Loupe Connector also available.

See our website for more information on our Luff line furlers. **Colligomarine.com**



CF1.5 Furler



CN3 Furler



CN5 Furler

Spinnaker Furlers

Furler	Safe Working Load	Bearings Drive End	Drive Diameter	Drive line Dia.
CF1.5S	3000	Torlon- Serviceable	112 mm (4.4")	8 mm
CN3S	3000	Double Row Sealed	160 (6.3")	8 mm
CN5S	7000	Double Row Sealed	185 (7.3")	8 mm

CN1.5S on a bowsprit flying an asymmetrical sail.



CF1.5S Spinnaker Furler System.



Our top down spinnaker furlers are a great way to handle a spinnaker sail. Just roll them up and drop them down. Styled after our luff line furlers with the addition of a Torlon® bearing supported Tack swivel. This allows the tack to swivel independently of the head of the sail as the sail is being furled in. Essential for great operation in any top down style spinnaker furler system is the Torque rope. Our torque rope system offers the best torsional stiffness of any braided line on the market. We use a unique clamping system for end terminations that allows for adjustment on the length to maximize hoist length.



CN3S Spinnaker Furler System.



CN5S Spinnaker Furler System.

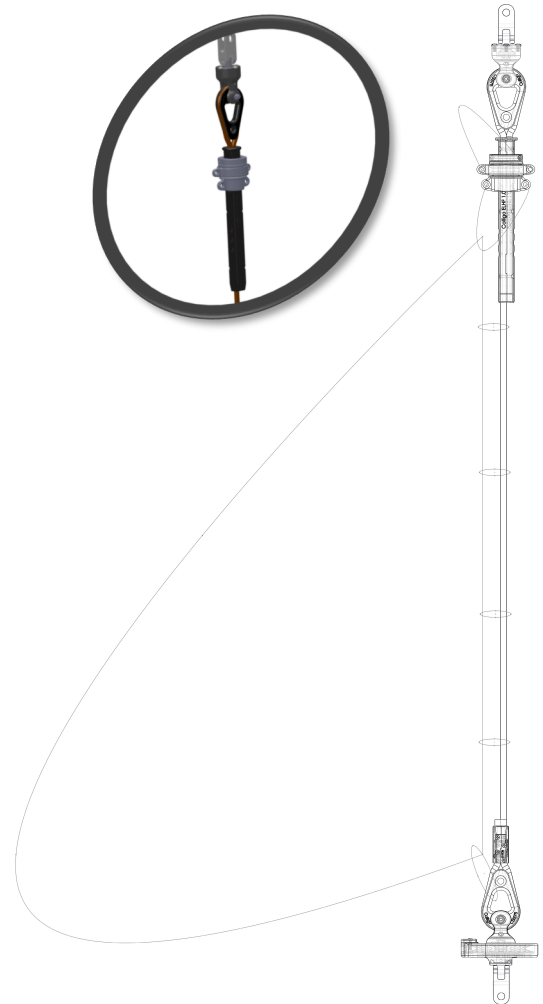


Torque line with line terminator and line clamp.

For more information on our Spinnaker Furlers see the website at: <http://preview.tinyurl.com/ColligoSpinfurlers>

Extra Light Headsail Furling System (ELHF)

Our ELHF 1.0 System is an easy retrofit on any sailboat to 40 ft. It allows the use of existing hank on sails. The system is much lighter than existing furling systems. In addition, structural furlers today use a Torque rope that is sewn into the sail which means the forestay has to be dropped to drop the sail, this requires redundancy in the rig and sail plan as other headstays are needed. The ELHF 1.0 System allows you to lower the sail without lowering the headstay and still gives you the lightweight and low windage of a synthetic forestay furling system. It is also a great product for OEM boatbuilders as it is so lightweight.



Advantages:

1. Lightweight compared to extrusion style furlers
2. Low Windage
3. Advantages of a structural furler with the ability to lower the sail and leave the headstay intact.
4. Uses existing halyard system for hoisting and tensioning.
5. Clamp system allows adjustability of headstay length.
6. Good for boats to 40 ft.
7. Can be used with all straight luff style of sails, Jibs, genoas, code sails, etc.



For simple rig purchases, check out our new
rigbuilder at Colligomarine.com

More information on our ELHF System here:
<http://tinyurl.com/colligomarineELHFsystem>

© 2015 Colligo Marine, LLC

Line Terminator® End Fittings

Patented

Part Number	CSS70	CSS71	CSS72	CSS73	CSS74	CSS75	CSS76	CSS77	CSS71-O	CSS72-O
Pin Size with Sleeve	0.25" (6.4mm)	.5" (12.8mm)	.625" (15.875mm)	3/4" (19mm)	.375" (9mm)	.5" (12.8mm)	7/8" (22mm)	1" (25.4mm)	Lashing Only	Lashing only

Our patented line terminator end fittings for high modulus lines are the strongest and safest end terminations available for spliced lines. The large diameter preserves line strength while the large line slots protect the line where it needs it the most, at the bend. We have line terminators for pinning to brackets or turnbuckles, or lashing to just about anything. Made with aircraft grade aluminum that is polished and hardcoat anodized for corrosion protection. Great for Shrouds, Forestays, Inner Forestays, Babystays, Backstays, Checkstays, Running Backstays, Bobstays, Bowsprit Shrouds, etc. Custom Sizes available.



Extremely lightweight line Terminator. See website for more info on this

CSS 75, Furlinator, (furler line terminator for torque lines, 9-13mm)

CSS75 A Furlinator (furler line terminator for Torque lines)



Shroud adjuster system using our stopper knot lashing to connect the lower shroud to the upper. See the website for more info on our stopper knot .

For simple rig purchases, check out our new [rigbuilder at Colligomarine.com](http://rigbuilder.colligomarine.com)

© 2014 Colligo Marine, LLC

Chainplate Distributors

Patented

Traditional Chainplate Distributors							
Part Number	CSS60	CSS61	CSS62	CSS62.5	CSS63	CSS95	CSS95L
Pin Size with Sleeve	0.25" (6.4mm)	0.5" (12.8mm)	0.625" (15.875mm)	0.625" (15.875mm)	0.875" (22.225mm)	0.5" (12.8mm)	0.5" (12.8mm)

Male (Carbon) Chainplate Distributors						SnapShackle Distributor
Part Number	CSS90	CSS91	CSS92	CSS93	CSS94	CSS96
Pin Size with Sleeve	0.25" (6.4mm)	0.5" (12.8mm)	0.625" (15.875mm)	0.750" (19.05mm)	0.375" (9.525mm)	0.375" (9.525mm)

Our patented chainplate distributors are designed to connect lashing systems to the deck or other hardware. They are designed for light weight and maximum efficiency, maintaining line separation for ease of adjustment and to form an attractive hourglass figure for a very secure lashing. The tighter the shroud or stay, the tighter the lashing. The lashing hole separation allows for incremental increase in tension when tightening and makes tying and untying the lashing much easier. Made from aircraft grade aluminum and hardcoat anodized.



Female Chainplate Distributors



Male (or Carbon)
Chainplate Distributors

Custom Stainless Distributor



CSS61 Distributor with CSS71 Line Terminator showing the hourglass shape of a well executed lashing.



Check out our new rig builder for fast and simple rigs orders at Colligomarine.com

Static Lashing Blocks

Sold with or without soft shackles, our static lashing blocks offer incredible flexibility in rigging options for any boat. Made with aircraft grade aluminum, our static blocks are designed for the running line to run thru the slot, offering lower friction and a larger bending radii for longer line life. Featuring our new double blocks sold separately or in a high strength, extremely lightweight, purchase system.



CSS42

CSS142



CSS242

CSS42 used as a 2/1 purchase block.



CSS242s used in a Boom Vang Purchase System on an offshore cruising boat.



CSS41	Static Lashing Block, 3-6 mm
CSS42	Static Lashing Block, 7-9 mm
CSS43	Static Lashing Block, 11-13 mm
CSS141	Enhanced Static Lashing Block, 3-6 mm, with lashing line
CSS142	Enhanced Static Lashing Block, 5-7 mm, with lashing line
CSS143	Enhanced Static Lashing Block, 11-13 mm, with lashing line
CSS242	Double Enhanced Static Lashing Block, 5-7 mm, with lashing line
CSSPS242	Purchase System, 5 mm dux, 20-48 inch travel, 5,000 lbs SWL

Softie® Soft Shackles



CSS102 used as a soft hank, tied on with Dyneema twine.

<u>Number</u>	<u>Size (ID x thickness)</u>	<u>SWL</u>	<u>Break Strength</u>
CSS102	1.5" (38mm) x 1/4" (6 mm)	2,000 lbs	5,000 lbs
CSS104	1.5" (38mm) x 3/8" (9 mm)	4,000 lbs	10,000 lbs
CSS117	4"(102mm) x 0.5"(12.5mm)	8,000 lbs	20,000 lbs
CSS119	5" (127mm) x 0.69" (17.5mm)	14,000 lbs	31,000 lbs
CSS121	6" (152mm) x 0.85" (22mm)	18,400 lbs	46,000 lbs

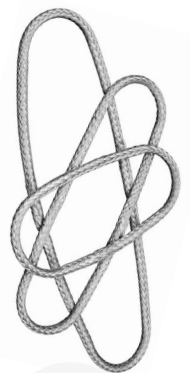
Made from Dyneema SK-75 or Dynex Dux (larger Sizes) our Softie®, soft shackles are all pull tested to their Safe Working Loads so you can have confidence that they will hold the load specified. Our Shackle use a handy leash that makes opening them up very easy. Use them anywhere you would use a normal shackle as long as there are no sharp edges. Much stronger than steel equivalents. Great for eliminating noisy metal shackles or eliminating head banging risks with metal shackles on sheet ends, halyard ends, etc.



i Loupes™ Infinite Loops of Dyneema

Made from Dyneema SK75, these Loupes are great for connecting to just about anything. Lightweight and Very Strong, each one is pull tested to its SWL and it's breaking strength is certified.

Break Strength (Vertical)	Part Number	Size	Vertical Geometry		Basket Geometry		Choker Geometry	
			lb	kg	lb	kg	lb	kg
5 mm Loupe								
4,000	CSSL5-75	3" (75mm) Dia.	1000	455	2000	909	800	364
4,000	CSSL5-100	4" (100mm) Dia.	1000	455	2000	909	800	364
4,000	CSSL5-150	6" (150mm) Dia.	1000	455	2000	909	800	364
7mm Loupe								
6,000	CSSL7-75	3" (75mm) Dia.	1500	682	3000	1364	1200	545
6,000	CSSL7-100	4" (100mm) Dia.	1500	682	3000	1364	1200	545
6,000	CSSL7-150	6" (150mm) Dia.	1500	682	3000	1364	1200	545
9mm Loupe								
12,000	CSSL9-125	5" (125mm) Dia.	3000	1364	6000	2727	2400	1091
12,000	CSSL9-175	7" (175mm) Dia.	3000	1364	6000	2727	2400	1091
12,000	CSSL9-225	9" (225mm) Dia.	3000	1364	6000	2727	2400	1091



Soft Snatch Blocks

Patent Pending

Our award winning soft snatch blocks. The blocks have no moving parts and work great with low friction lines like Dyneema. The soft shackle allows for attachment without the need for the line end. Great for Spinnaker sheet leads, external mast blocks for halyards, tweakers, etc. High strength and very low weight. Available without the soft shackle also.



- CSS341** Soft Snatch Block, 5-9 mm line, 5,000 SWL
- CSS341BL** Snatch Block without Soft Shackle 5-9mm line
- CSS341.5** Soft Snatch Block, 9-12 mm line, 5,000 SWL
- CSS341.5BL** Snatch Block without Soft Shackle 9-12 mm line
- CSS342** Soft Snatch Block, 10-16 mm line, 10,000 SWL
- CSS342BL** Snatch Block without Soft Shackle 10-16 mm line

Our Soft Snatch Blocks and Soft Padeyes were both winners of the 2012 Pittman award for Innovation.

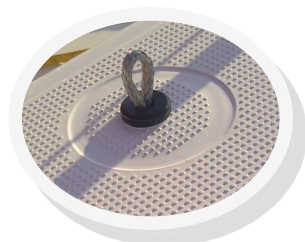


Soft Padeyes

Patented

- CSS31** Soft padeye, 3/4 inch(19mm) 3500 lbs SWL
- CSS31C** Soft padeye, 3/4 inch(19mm) 3500 lbs SWL, with waterproof cap

Our patented solution for heavy, rusty, padeyes that can break your toe! These Simple and lightweight padeyes use a piece of 5 mm dyneema line that can be easily changed when needed. Waterproof cap version uses an O ring to eliminate dripping. Fits up to a 1" deck thickness.



Cheeky Tang Mast Connectors

Patented

The "right" way to connect synthetic shrouds to your mast! Our connections are essentially custom Cheek Blocks that are mounted to the side of your mast. Lightweight and with no moving parts these fittings allow you to just place a spliced loop on them. As simple as it gets, these are really great for rotating masts but work good for fixed masts also. The shroud is fully inspectable and is virtually the safest method of connecting shrouds to a mast. Locking screw holds the spliced loop on even with a flopping shroud. In four sizes. All have a thin rubber backing for isolation. Now with T fitting adapters also, that turn a coastal fitting into something much more robust for offshore travels.



9-11 mm Cheeky Tang

Cheeky tangs with thru bolt for mast.



Double Cheeky Tangs are for double lower shrouds or combination connectors for Caps/Runners, etc.

chkytng 5-7	Cheeky Tang for 5-7 mm line, Up to 1/2" thru bolt
chkytng 9-11	Cheeky Tang for 9-11 mm line, Up to 5/8" thru bolt
chkytng 11-13	Cheeky Tang for 11-13 mm line, Up to 3/4" thru bolt
chkytng 15-17	Cheeky Tang for 15-17 mm line, Up to 1 1/4" thru bolt
chkytngdbl 5-7	DBL Cheeky Tang for 5-7 mm line, Up to 1/2" thru bolt
chkytngdbl 9-11	DBL Cheeky Tang for 9-11 mm line, Up to 5/8" thru bolt
chkytngdbl 11-13	DBL Cheeky Tang for 11-13 mm line, Up to 3/4" thru bolt
chkytngdbl 15-17	DBL Cheeky Tang for 15-17 mm line, Up to 1 1/4" thru bolt

Fork Fittings

This fitting is very flexible, it can be used on the mast for connecting to a tab or on deck connecting to a chainplate. It can be used to set up a 3/1 purchase system, simple and elegant. It can be spliced directly to or a whoopie sling setup can be used for tensioning. These work great on Beachcats! The Colligo Fork Fitting is designed with a radiied slot and a large hole with a very generous radius.



CSS61-F



CSS60-F



CSS95-F



CSS60-F on a beach cat Bridle System.

Colligo Marine Fork Distributors

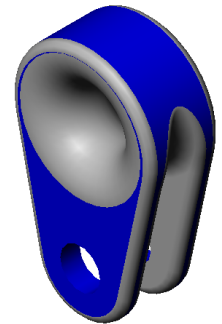
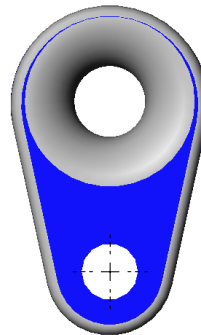
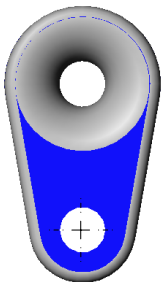
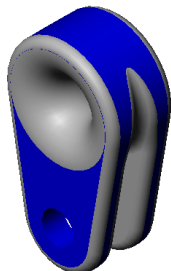
- CSS60-F 3-6mm line 1/4" pin size
- CSS95-F 5-7 mm line 3/8" Pin Size
- CSS61-F 7-9 mm line 1/2" pin size

Line can be spliced thru the hole or thru the slot, or both!

CSS60-F



CSS95-F



CS61-F

FRESH				DEBUR AND BREAK SHARP EDGES		DO NOT SCALE DRAWING		REVISION	
See Note on Finish						Colligo Marine, LLC			
NAME	SIGNATURE	DATE			TITLE				
DRAWN	John Franta	1/24/11			Fork Distributors				
CHKD					DWG NO.				
APPVD					SCALE:1:1				
MFG					SHEET 1 OF 1				
Q.A.					A3				
WEIGHT:									

Stackers™, Stackable Static Lashing Blocks

Patent Pending

These are lightweight static blocks with an integrated becket that can be stacked together to provide a purchase system from 2/1 up to a 5/1. They are designed for slippery lines like Dyneema and offer a very strong and simple alternative to bearing blocks. Stackers are a great solution for challenges that offer a high load/low travel or a low load/high travel situation where their simplicity and lightweight are beneficial.



Can be used with a soft shackle or spliced directly into a running back or other rigging for an integrated purchase system.

Lashing holes included for securing the running line.

Dynamic line can be run to a cleat or lashed off on the system itself.

Available in 3 sizes for:

- | | |
|-------------------------|--------|
| Up to 6 mm running line | SSB-6 |
| 6- 9 mm running line | SSB-9 |
| 9- 14 mm running line | SSB-14 |

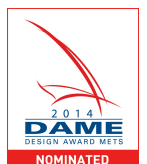


A single block that can easily be made into a double or even a triple block setup.



These blocks can also be lashed together becket style. See the website for more information.

Our Stackers have won an honorable mention Dame Award



Line Guides (Fairleads)

Colligo Line Guides (fairleads) help to organize your deck and lead your lines fairly back to the cockpit. Now available in oval shapes.



CNOLG16



CN34BLK2



CN33BLK1



CN33BLK2



Opening Oval
Line Guide
CNOLG16QR



CN34QRS



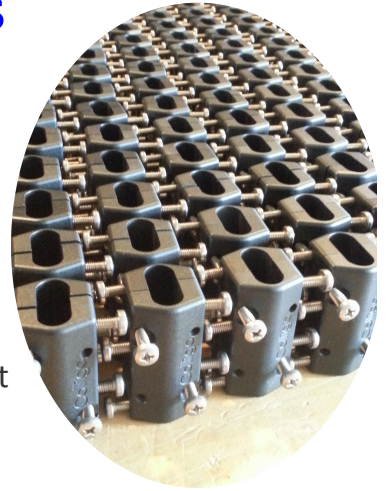
CN33BLK4

CN33BLK4	Line Guide, 4 Line, Black
CN33BLK2	Line Guide, 2 Line, Black
CN33BLK1	Line Guide, 1 Line, Black
CNOLG16	Oval Line Guide, 16mm x 52mm
CNOLG16QR	Oval Line Guide, Opening, 16mm x 47mm
CNOLG22	Oval Line Guide, 22mm x 74mm
CN34BLK4	Line Guide, 2 piece, 4 Line, Black
CN34BLK2	Line Guide, 2 piece, 2 Line, Black
CN34QR	Quick release line guide, 2 line, deck mount, Delrin
CN34QRS	Quick release line guide, 2 line, 1" stanchion mount, Delrin
CN34BLK2S	Line Guide, 2 piece, 2 Line, Black for 1" dia Stanchions
CN34BLK2S1.25	Line Guide, 2 piece, 2 Line, Black for 1.25" dia Stanchions

Torque Lines and Clamps

Patent Pending

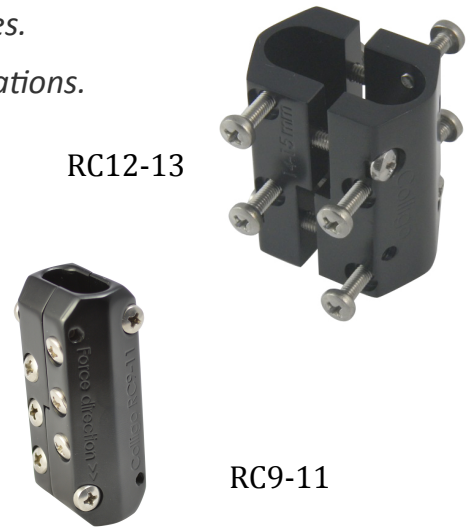
Our Patent Pending rope clamp works with all cross braided Torque or Luff lines. Top down spinnaker furlers, code zeros, gennakers, etc. This clamp makes the time consuming process of attaching end fittings to torque lines into a virtual pleasure. It takes 5 minutes to install and can be removed for length adjustment of the line. Now you can actually take the line on the boat and set the length precisely! Clamps can be doubled for more holding if needed.



***These clamps are only for lines designed for high torsional stiffness lines.*

See the website for more information on our line clamps and their applications.

RC 5-8	Torsion Rope Clamp, 5-8 mm OD line
RC 9-11	Torsion Rope Clamp, 9-11 mm OD line (investment casting)
RC12-13	Torsion Rope Clamp, 12-13 mm OD line
RC 14-15	Torsion Rope Clamp, 14-15 mm OD line
RC 15-17	Torsion Rope Clamp, 16-17 mm OD line
RC 18-19	Torsion Rope Clamp, 18-19 mm OD line



Torque lines

CSS107CC	Torque Line, 9 mm OD
CSS109CC	Torque Line, 11 mm OD
CSS111CC	Torque Line, 13 mm OD
CSS113CC	Torque Line, 15 mm OD
CSS115CC	Torque Line, 17 mm OD
CSS117CC	Torque Line, 19 mm OD

Our Torque Lines are custom luff lines for code zero style sails and torque lines for top down furled spinnakers. We have a custom line made for us using Dynex Dux as the core and a proprietary cover that simply gives the best combination of low stretch and torque transmission.

13mm Torque line with CSS75A Furlinator

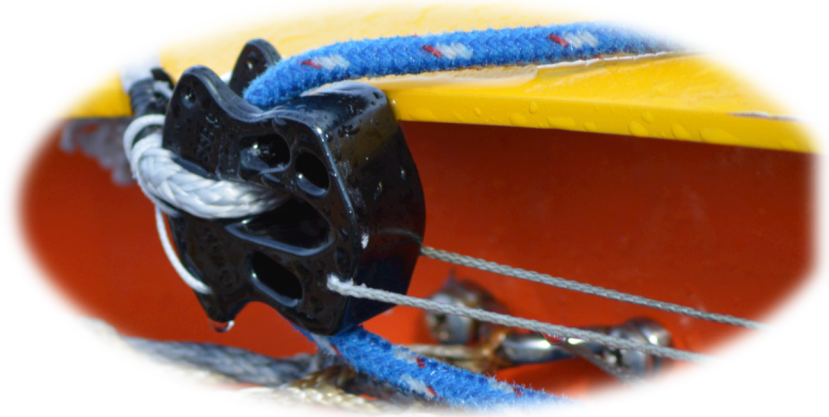


11mm Torque line on a CF 1.5 line Furler.



Colligo Marine[®]

Rigging reduced to its elegant essentials



Colligo Marine, LLC
1165 Highland Way
Grover Beach, CA 93433
001.480.703.3675
info@colligomarine.com

See many more great synthetic rigging Ideas In
our photo section at www.Colligomarine.com.

© 2015 Colligo Marine, LLC