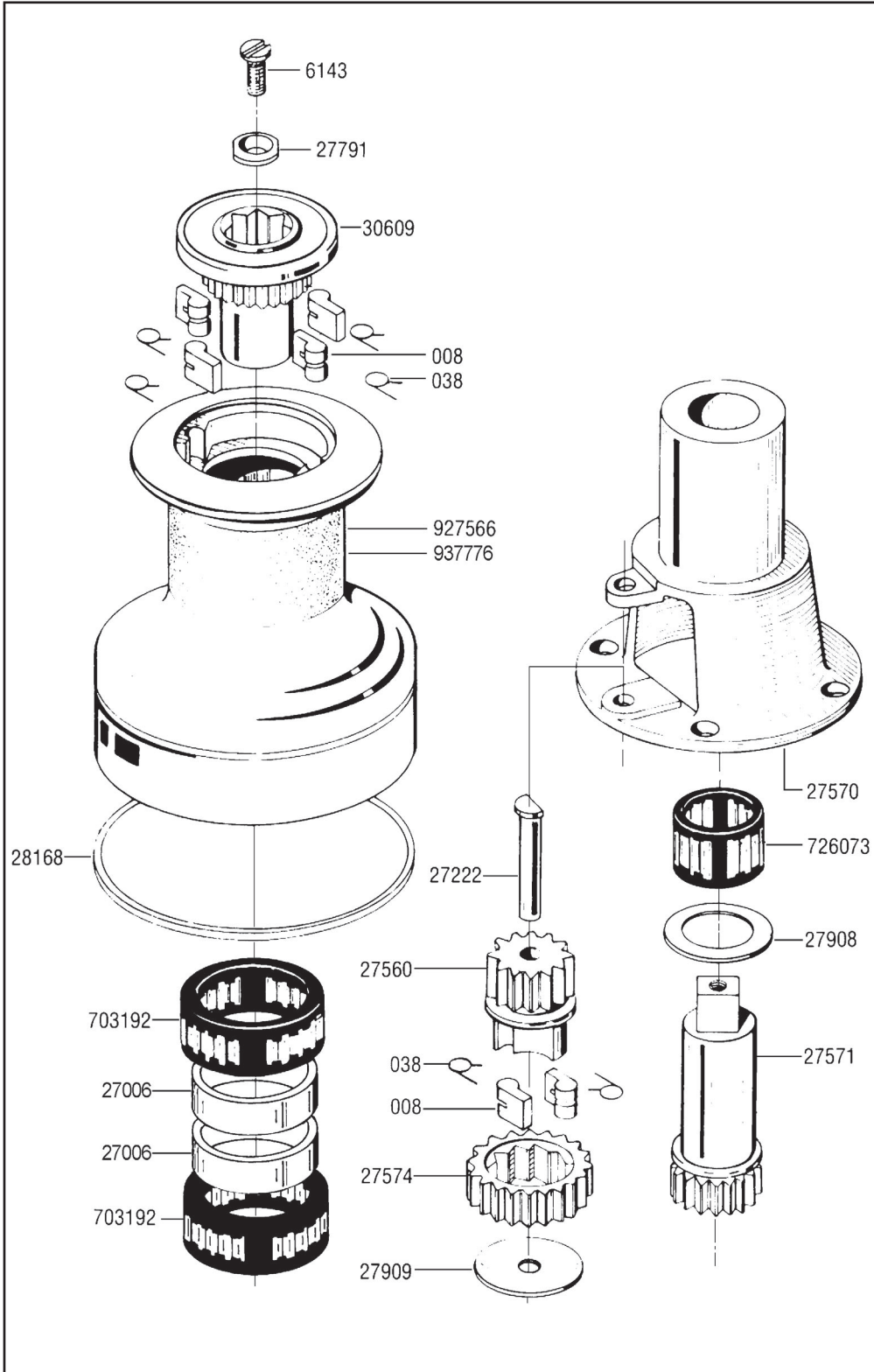


# 40.2

## Two Speed Winch

### Winch Parts Installation Service

# HARKEN®



#### Required Tools

|                               |
|-------------------------------|
| Screwdriver                   |
| Plastic Head Hammer or Mallet |
| Small Knife                   |
| Brush                         |
| Rags                          |
| Solvent                       |
| Oil                           |
| Grease                        |

#### Parts List

|        |                |
|--------|----------------|
| 008    | Pawl           |
| 038    | Pawl Spring    |
| 6143   | Top Screw      |
| 27006  | Bearing Spacer |
| 27222  | Gear Shaft     |
| 27560  | Pawl Gear      |
| 27570  | Center Stem    |
| 27571  | Spindle        |
| 27574  | Ratchet Gear   |
| 27791  | Plastic Washer |
| 27908  | Washer         |
| 27909  | Cover Plate    |
| 28168  | Red Line Ring  |
| 30609  | Ratchet Head   |
| 703192 | Bearing        |
| 726073 | Bearing        |
| 927566 | Aluminum Drum  |
| 937776 | Bronze Drum    |

#### Suggested Service Kits

|        |        |             |
|--------|--------|-------------|
| BK4512 | 10     | 008 Pawls   |
|        | 10     | 038 Springs |
| BK4513 | 100 ml | Grease      |

**When ordering parts, please include a "B" before each number (i.e. B008).**

## Service winch before the sailing season begins and once during.

### ■ Installing Winch

- Make sure mounting surface is flat
- Check sheet entry angle. Should be at least 8° (see drawing)
- Open winch
- Position winch on deck with drive gear where sheet enters winch drum and mark holes
- Remove winch and drill holes
- Mount using five (5) 1/4" (6 mm) flathead machine screws
- Apply bedding compound and bolt winch to boat
- Clean excess bedding compound from base drain holes
- Lubricate and close winch

### ■ Opening Winch

- Remove top screw
- Lift off drum

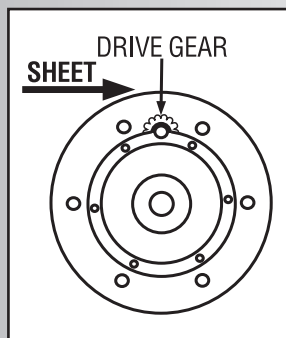
### ■ Servicing Winch

- Remove pawls and springs – service as below
- Remove bearings, gear shaft and gears
- To reach interior shaft bearing, winch must be removed from deck
- Clean all parts with rags and solvent
- Use a brush to lubricate all moving parts lightly with grease
- Replace pawls and springs and lubricate lightly with oil
- Reassemble and close winch

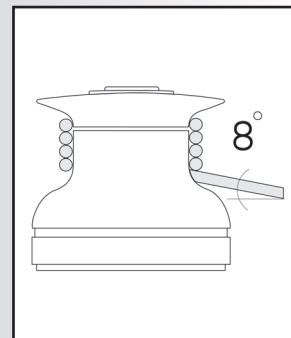
### ■ Servicing Pawls

- Catch spring with knife and hold against pawl
- Lift out pawls
- Clean and check for wear
- Lubricate pawls using oil
- Place spring against pawl with straight leg against pawl
- Hold spring closed and slip pawl into pawl socket

### Mounting

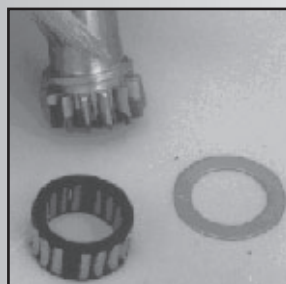


Position drive gear where sheet enters winch drum.

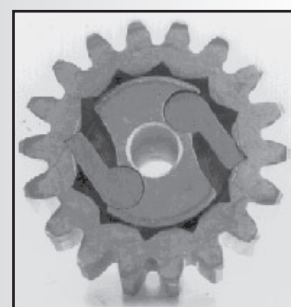


Sheet entry angle must be at least 8°.

### Servicing Winch



Clean all parts with solvent.

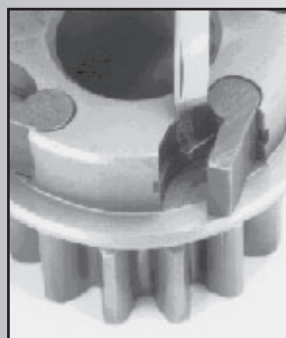


Use a brush to spread a light, even coat of grease.

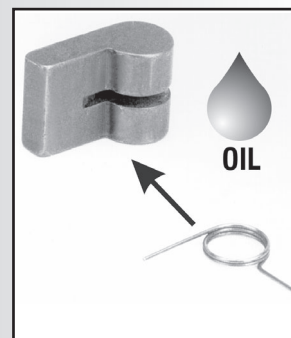


If ratchet gear is mounted backwards, winch will slip.

### Servicing Pawls



Use knife to free captive spring.



Insert spring with straight leg against pawl. Use oil for lubrication.

4466/10-04



# HARKEN®

USA: 1251 E. Wisconsin Ave., Pewaukee, WI 53072 USA • Tel: (262) 691-3320 • Fax: (262) 691-3008 • Web: harken.com • E-mail: harken@harken.com  
 ITALY: Via Della Cerca, 12/14, 22070 Lurago Marinone, Como, Italy • Fax: (39) 031.3520031 • Tel: (39) 031.3523511 • Web: harken.it • E-mail: info@harken.it