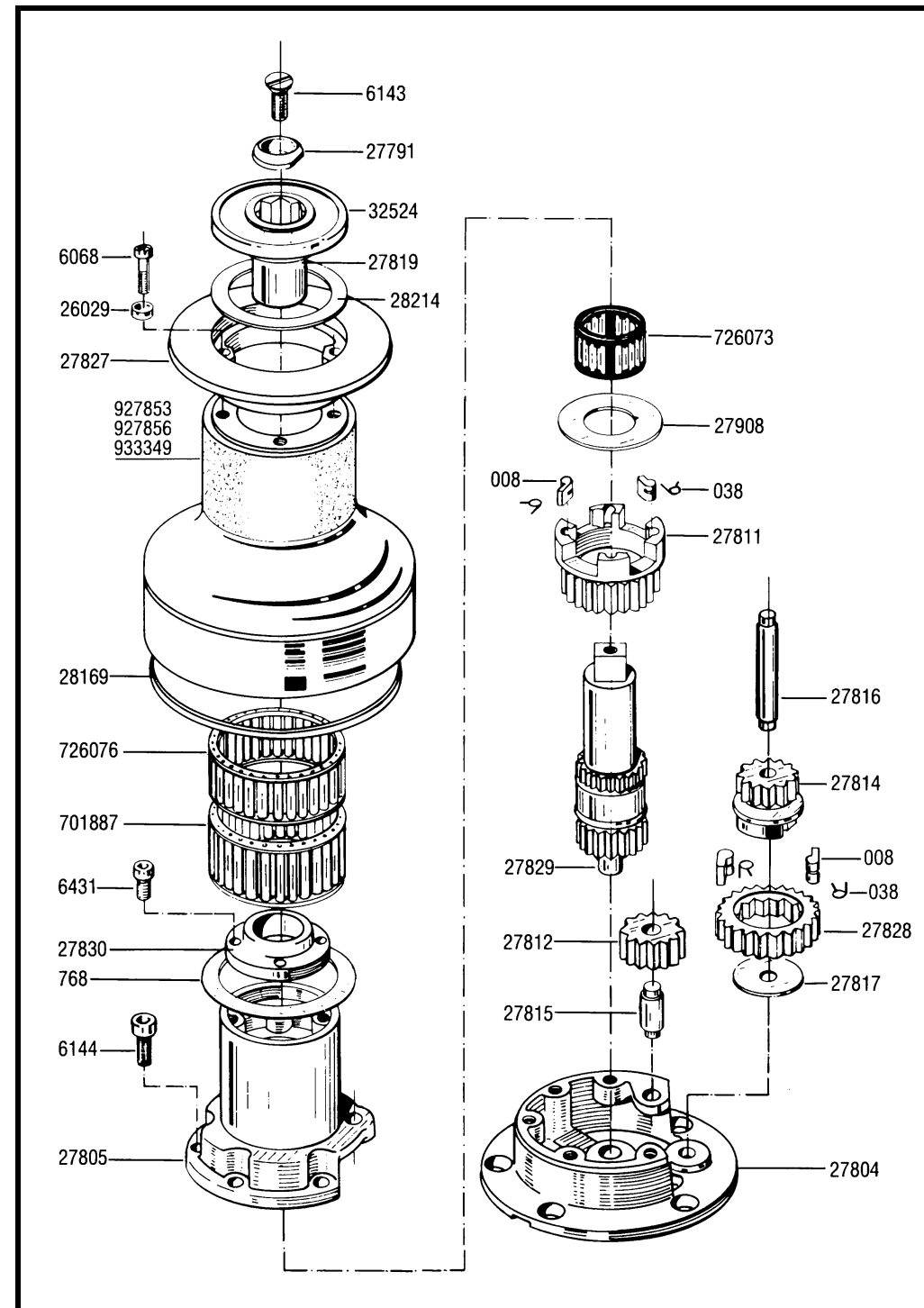


44.2

Two Speed Winch

HARKEN®



When ordering parts for service, please include a "B" before each number (i.e. B008).

Tools

Tools Required

Allen Wrench (6mm)
Allen Wrench (5mm for Self-Tailing)
Screwdriver
Plastic Head Hammer or Mallet
Small Knife
Brush
Rags
Solvent
Oil
Grease

Two Speed 44.2

Parts List

008	Pawl
038	Pawl Spring
768	Thrust Washer
6068	Screw
6143	Top Screw
6144	Screw
6431	Screw
26029	Plastic Washer
27791	Plastic Washer
27804	Base
27805	Center Stem
27811	Pawl Gear
27812	Gear
27814	Pawl Gear
27815	Gear Shaft
27816	Gear Shaft
27817	Cover Plate
27819	Handle Socket
27827	Drum Crown
27828	Ratchet Gear
27829	Spindle
27830	Stem Cap
27908	Washer
28169	Red Line Ring
28214	Plastic Washer
32524	Top Cap
701887	Bearing
726073	Bearing
726076	Bearing
927853	Aluminum Drum
927856	Chrome Drum
933349	Bronze Drum
BK4512	10 Pawls 008
	10 Springs 038
BK4513	100ml Grease

Suggested Service Kits

BK4512	10 Pawls 008
	10 Springs 038
BK4513	100ml Grease

Self-Tailing 44.2st

Parts List

6081	Screw
6106	Ball (32 required)
6143	Top Screw
6351	Screw
6431	Screw
26731	Roller
27699	Washer
27791	Plastic Washer
27818	Drum Crown
27841	Handle Socket
32373	Guide Ring
32536	Top Cap
33587	Upper Jaw
33588	Lower Jaw
33589	Adjusting Castle
33665	Shimming Washer
33696	Chrome Stripper Arm
33698	Stripper Arm Support
33702	Spring
33751	Spring
33752	Line Peeler
33789	Roller Shaft
33898	Bushing
35328	Bronze Stripper Arm
933696	Chrome Stripper Arm Assembly
BK4512	10 Pawls 008
	10 Springs 038
BK4513	100ml Grease

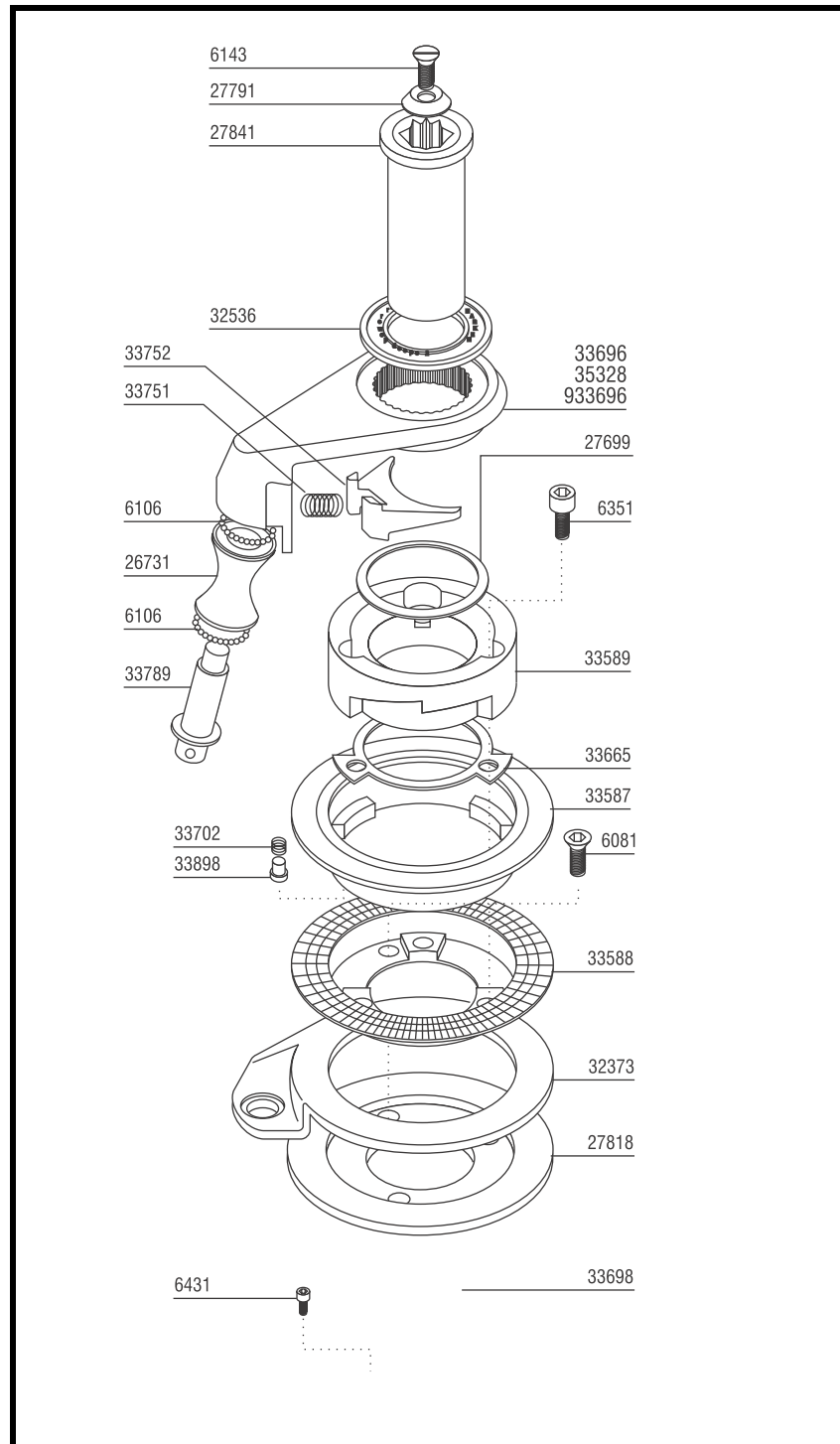
Suggested Service Kits

BK4512	10 Pawls 008
	10 Springs 038
BK4513	100ml Grease

44.2st

Two Speed Self-Tailing Winch

Winch Parts and Service Instructions



Recommended Service Cycle – Service winch before the sailing season and once during.

Adjusting Self-Tailer

If lines slip in the self-tailer, be sure that there are four or five wraps on the drum, then consider closing the jaws by pressing down on the upper jaw 33587 and turning counterclockwise.

The 33665 shimming washer must be removed to use small line.

The winch is more efficient when the jaw opening matches line size, so close the jaws only if you are using smaller line.

Positioning Stripper Arm

- Loosen top screw
- Remove handle socket
- Lift stripper arm and position as desired

Opening Winch

- Remove top screw
- Lift off drum
- On self-tailing winches, lift off stripper arm with drum

Servicing Winch

- Remove bearings from center stem
- Remove allen screws holding center stem to base
- Remove center stem carefully
- Remove pawls and springs - service as below
- Remove all bearings, gear shafts and gears
- Clean all parts with rags and solvent
- Use a brush to lubricate all gears, gear shafts, bearings, teeth and all moving parts lightly with grease
- Replace pawls and springs and lubricate lightly with oil
- Reassemble and dose winch

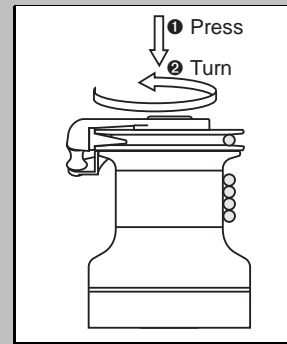
Servicing Pawls

- Catch spring with knife and hold against pawl
- Lift out pawl
- Clean and check for wear
- Place spring against pawl with straight leg against pawl
- Hold spring closed and slip pawl into pawl socket
- Lubricate pawls using oil

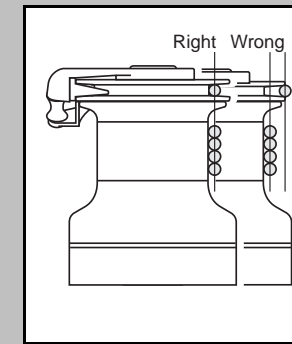
Fitting on Boat

- Make sure mounting surface is flat
- Check sheet entry angle
- Open winch
- Position winch on deck with drive gear where sheet enters winch drum and mark holes
- Remove winch and drill holes
- Mount using five 5/16" (8mm) flat head machine screws
- Apply bedding compound and bolt winch to boat
- Clean excess bedding compound from base drain holes
- Lubricate and reassemble winch

Adjusting Self-Tailer



Press and turn to adjust self-tailer.



Correct opening: Sheet fits completely into jaw and rests against drum.

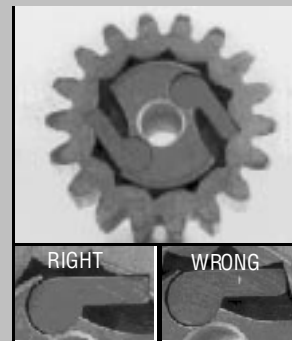
Servicing Winch



Clean all parts with solvent.



Grease lightly and spread grease evenly. Use a brush.

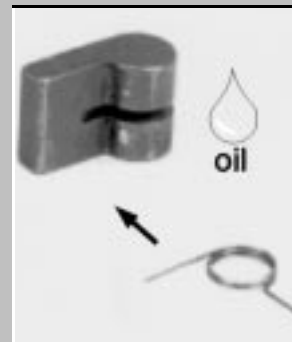


Attention: Ratchet gear mounted backwards will cause winch to slip.

Servicing Pawls

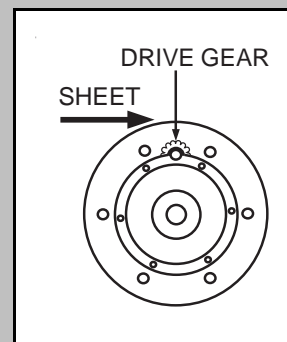


Use a knife to free captive spring.

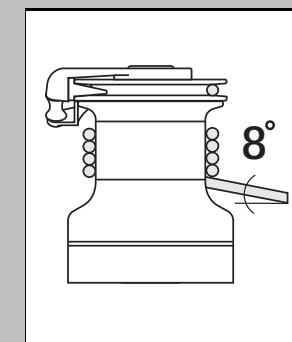


Insert spring with straight leg against pawl. Use oil for lubrication.

Fitting on Boat



Position drive gear where sheet enters winch drum.



Sheet entry angle must be at least 8°.

H4604-5/98