

# HARKEN®

N15W24983 Bluemound Rd., Pewaukee, WI 53072-4974 USA  
Telephone: (262) 691-3320 • Fax: (262) 701-5780  
Web: <http://www.harken.com> • Email: [harken@harken.com](mailto:harken@harken.com)

## INSTALLATION SHEET

### CB Traveler Cars

Micro: 2700, 2701, 2702, 2703

Small Boat: 382, 2726, 2727, 2728, 2729, 2730, 2731, 2732,  
2733, 2734, 2735, 2736, 2737, 2738, 2753, 2754, 2756, 2757

### Accessories: Control Tangs

Micro: 2705; Small Boat: 2749

## Terms

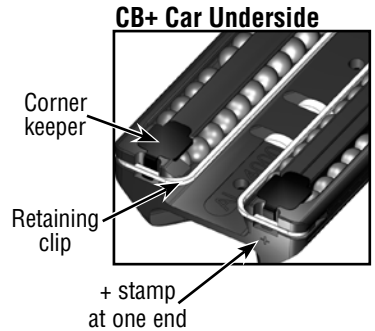
**CB** – Captive bearings. Wire retaining clips hold bearings captive for easy loading onto track and for maintenance.

**CB+ cars** – CB cars that can convert to old style non-CB track.

**Corner keepers** – Used on CB+ cars to help retain balls when cars are off track. Introduced beginning of 2015.

**Retaining clips** – Formed wires for holding bearings.

**CB style track** – Track designed with deeper grooves to accept CB car retaining clips.



## Track Compatibility

Car	Car width	Track
Micro	1 <sup>9</sup> / <sub>16</sub> " (40 mm)	2707, 2709
Small Boat	2 <sup>1</sup> / <sub>4</sub> " (57 mm)	373, 374, 2720, 2721, 2725, 2751

**Note: Track not shown actual size.**



CB cars are shipped for use on CB track with grooves at waist to accept retaining clips. Track was first supplied by Harken in 2002. See end of manual if you have older track.

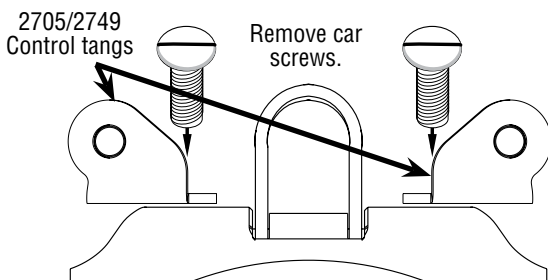
## Installing Traveler Car on Track

Position car at end of track and gently roll car on. Car should roll on easily. If not, check to make sure you are using CB track. **Do not remove ball retaining wires. Cars will not roll unless they have retaining clips. Exception: CB+ cars can convert to non-CB cars. See third page.**

## Installing Control Tangs on 2700, 2726, 2727 Traveler Cars

Remove screw from car, add drop of Loctite® adhesive to screw, insert, and install tang.

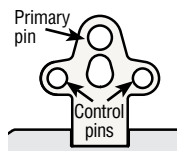
**Note:** 2705 control tang is shown below.



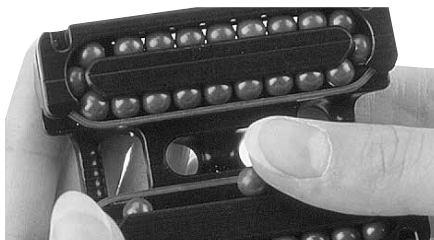
Loctite is a registered trademark of Henkel AG & Company KGaA.

**Block Compatibility with: 2730, 2731, 2735 Toggle Cars and 2747, 2748 Stand-Up Toggles**

Car	Primary pin	Carbo mainsheet blocks	Control pin	Carbo control blocks
2730	5 mm	57 mm: singles, fiddles	4 mm (5/32")	29 mm
2731	(3/16")	40 mm: doubles, triples		348
2735	6 mm	57 mm: doubles, triples		340 341



## Loading Ball Bearings into CB Cars



Position car on edge with retaining clip in place. Gently push one (1) ball at a time into car from center of clip. Allow balls to roll into return race and insert remaining balls.

**Do not overfill car.**

## Ball Replacement Chart

CB car	Description	Balls/ car	Balls	Order part no.	Balls/ set	Ø
2700, 2701, 2702, 2703	Micro	40	Torlon®	2708	20	3/16" (5 mm)
2726, 2728, 2730, 2732, 2753	Small Boat LL*	40	Delrin®	176	21	1/4" (6 mm)
2727, 2729, 2731, 2733, 2734, 2754, 2756	Small Boat	40	Torlon	177	21	1/4" (6 mm)
2735, 2736, 2737, 2738, 382, 2757	Small Boat 1250	60	Torlon	177	21	1/4" (6 mm)

\*Low-load car

Delrin is a registered trademark of E. I. du Pont de Nemours and Company or its affiliates.

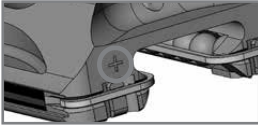
Torlon is a registered trademark of Solvay Advanced Polymers.

## Removing Ball Bearings from CB Cars



Position car on edge and gently push one (1) ball at a time from center of retaining clip. Do not remove retaining clip from car.

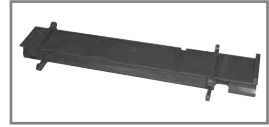
## CB+ Small Boat Cars can Convert to Fit Old-Style Non-CB Track



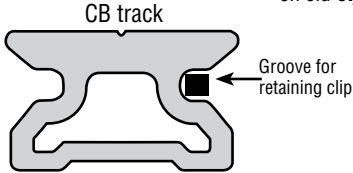
CB+ cars designed for CB track.



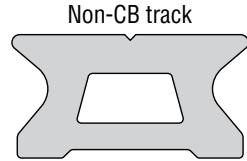
CB+ cars can convert to run on old-style, non-CB track.



Order HSB116 car loader.



Track built after 2002. No need to convert car.



Track built before 2002.

## Converting Small Boat CB + Cars to Fit Old-Style Non-CB Track

**Important! Requires CB+ cars. See complete instructions at [www.harken.com/manuals](http://www.harken.com/manuals). See traveler instructions 5070.**



1. Use flat-bladed screwdriver to push retaining clip toward end.



2. Pry retaining clip off and dump balls in box.



3. Remove retaining clips and corner keepers over box to catch balls.



4. Hold car on edge and load lower side with correct number of balls. **DO NOT OVERLOAD.** Consult chart to confirm quantity.



5. Remove two (2) clips from car loader. Slide car loader in so loading port is on the side of car without balls.



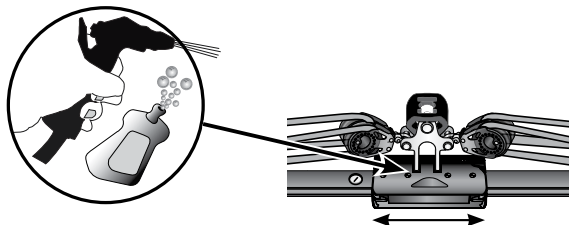
6. Put one (1) clip on "open" end of loader. Load rest of balls through ball loading port into empty bearing race. Consult chart to confirm quantity. Line up car loader with track and gently roll car onto track. **Do not use corner keepers.**

## Inspect

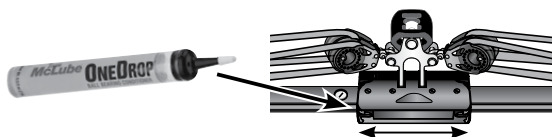
Frequently inspect shackles and control block fittings for signs of fatigue. Replace as necessary. Make sure every installation includes Harken track endstops. Arrange control tackle so cars do not hit endstops under load.

## Maintenance

**Traveler cars:** Clean by frequently flushing with fresh water. Periodically clean car by squirting a detergent/water solution into center openings. Roll car back and forth to distribute evenly. Flush bearings with fresh water.



Do not use spray lubricants because ball bearings can skid, not roll. Once car and track are dry, apply one (1) to two (2) drops of McLube® OneDrop™ ball bearing conditioner to ball contact surfaces of track. Roll car back and forth through OneDrop conditioner several times to distribute onto bearings. Wipe remaining OneDrop off track. OneDrop conditioner is preferred, but you can also use one (1) to two (2) drops of a light machine oil. Too much oil attracts dirt.



**Track:** Clean with detergent and water.

**Important! Exposure to some leak cleaners and other caustic solutions can result in discoloration of part and is not covered under the Harken warranty.**

## Warranty

For additional safety, maintenance, and warranty information see [www.harken.com/manuals](http://www.harken.com/manuals) or the Harken catalog.