

# System B

## Typical boat size:

Monohulls: length 15.2 - 18.3 m (50 - 60');  
mainsail area under 83 m<sup>2</sup> (900 ft<sup>2</sup>)

Multihulls: length 12.2 - 15.2 m (40 - 50');  
mainsail area under 65 m<sup>2</sup> (700 ft<sup>2</sup>)

About CB and slider Battcar systems: See feature pages at beginning of this section.



Aluminum web-on headboard plates are easy for sailmakers to install. Plates have radiused edges to protect the sail and fit 25 mm (1") webbing strap. Holes threaded into plates accept 416 cheek blocks for leech line. Web-on plates are required for the 3852 System B CB headboard car. Sold separately.



3852



3859



3856  
3857  
3879



3860



3863

### CB BALL BEARING CARS



3833



3834  
3835



3836

### SLIDER CARS



Pelagic Australis, Pelagic Expeditions © Skip Novak

Part No.	Description	Length		Width		Weight		Max headboard thickness		Maximum working load	
		in	mm	in	mm	oz	g	in	mm	lb	kg
<b>CB Cars: Typical Boat Length: Monohulls 15.2 - 18.3 m (50 - 60'); Multihulls 12.2 - 15.2 m (40 - 50')</b>											
3852*	Headboard car assembly	10½	267	2¾	70	41.4	1173	7/16	12	3200	1450
3863*	Intermediate car	29/16	68	2¾	70	6.8	191	—	—	524	238
3856*	Battcar/10 mm stud**	4¼	108	2¾	70	14.3	406	—	—	1260	571
3857	Battcar/12 mm stud**	4¼	108	2¾	70	14.6	413	—	—	1260	571
3879	Battcar/14 mm stud**	4¼	108	2¾	70	15.1	429	—	—	1260	571
3859	Universal Battcar**	4¼	108	2¾	70	12.3	348	—	—	1260	571
3860	Reef car	59/16	132	2¾	70	14.4	408	—	—	1600	725
3861	Web-on headboard plate ‡	6¾	172	63/8	161	10.3	292	—	—	—	—
3862	Web-on headboard plate/flat-top ‡	513/16	148	63/16	157	11.2	317	—	—	—	—
<b>Slider Cars: Typical Boat Length: Monohulls 15.2 - 18.3 m (50 - 60'); Multihulls 12.2 - 15.2 m (40 - 50')</b>											
3833	Headboard car assembly†	7½	190	111/16	42	14.8	420	9/16	16	3200	1450
3836	Intermediate car	29/16	56	111/16	42	2.9	82	—	—	1260	570
3834	Battcar/10 mm stud**	29/16	56	111/16	42	4.5	128	—	—	1260	570
3835	Battcar/12 mm stud**	29/16	56	111/16	42	4.9	140	—	—	1260	570

See page 35 for replacement balls. \*Available as a non-CB car on a car loader to run on a non-CB style track supplied before 2004. Add .NW to end of part number.

160 ‡ Contact Harken for headboard plate for non CB systems. \*\*Batten receptacle not included. †Fits standard sailmaker-supplied headboard.

# System B

About CB and Slider Battcar Systems: see feature pages at beginning of this section.

Mainsail luff length		Number of 3844 track section
ft*	m*	
39'10" - 46'6"	12.13 - 14.17	7
46'7" - 53'3"	14.19 - 16.23	8
53'4" - 60'	16.25 - 18.29	9
60'1" - 66'9"	18.31 - 20.35	10
66'10" - 73'6"	20.37 - 22.44	11

\*Track extends above sail luff. Using screwpin endstop kits will increase lengths.

## Mast Track

3844 track mounts to mast using a unique slug system that allows mast-up installation.

Use flanged track when mounting to carbon spars. Track features a groove for racing sails with boltropes or slugs. Use C10879 endstop feeder kit to easily raise sails with boltropes.

Part No.	Description	Length		Weight		Fastener spacing		Fastening method
		in	m	oz/ft	g/m	in	mm	
3844	Slug-mount track	81 $\frac{1}{8}$	2.06	5.66	527	3 $\frac{15}{16}$	100	Mounting slugs
3849.2M	Flanged track	78 $\frac{3}{4}$	2	12	1119	—	—	Adhesive
3849.6M	Flanged track	236 $\frac{1}{4}$	6	12	1119	—	—	Adhesive
C10879	Endstop/feeder kit*	15 $\frac{3}{4}$	.4	22.4	636	2 $\frac{15}{16}$	75	Fasteners/adhesives

\*Use with 3849 flanged track. Contact Harken for price and lead time.

## Traveler Track: Drill/Tap

For masts without internal sail track, attach R27 Midrange traveler track by drilling and tapping the spar. Join track sections with splice links. Order one per track section. Order one low-beam endstop (sold in pairs).

Part No.	Description	Splice link	Endstop	Ordering information	Fastening method
R27	Midrange track	1619	E2700	Page 127	Drilling and tapping

## Mounting Kits and Endstops

Mounting kit slugs are available for flat or round mast grooves. Order one kit per track section.

Use pinstop endstop to easily remove cars and mainsail. Order one kit only.



3845  
3846  
3864

MOUNTING KIT



3850  
3851  
3865

ENDSTOP KIT/FIXED



3847  
3848  
3866

ENDSTOP KIT/SCREWPIN



C10879

ENDSTOP/FEEDER KIT

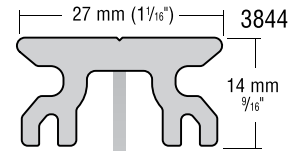
## Track Mounting Kits: Slug Mount\*

Part No.	Description	Mounting slug				Connector slug				Fits flat mast groove gap					
		Length	Weight	Mounting	Connector	Connector	Min	Max							
		in	mm	oz	g	slugs/kit	in	mm	oz	g	slugs/kit	in	mm		
3845	Round mast groove	$\frac{7}{8}$	22	.43	12	19	3	76	1.27	36	1	$\frac{7}{16}$	11	$\frac{9}{8}$	16
3846	Flat mast groove	$\frac{7}{8}$	22	.56	16	19	3	76	1.71	48	1	$\frac{7}{16}$	11	$\frac{9}{8}$	16
3864	Flat mast groove‡	$\frac{7}{8}$	22	.48	14	19	3	76	1.29	37	1	$\frac{3}{8}$	9.5	$\frac{7}{16}$	11

## Endstop Kits: Slug Mount\*

Part No.	Description	Track end length		Weight		Mounting slugs/kit
		in	mm	oz	g	
3847	Round mast groove/pinstop	9 $\frac{1}{2}$	241	8.3	234	3
3848	Flat mast groove/pinstop	9 $\frac{1}{2}$	241	11.3	322	3
3850	Round mast groove/fixd (pair)	—	—	3.3	94	2
3851	Flat mast groove/fixd (pair)	—	—	3.7	105	2
3865	Flat mast groove/fixd‡	—	—	3.5	100	2
3866	Flat mast groove/pinstop‡	9 $\frac{1}{2}$	241	11.1	316	3

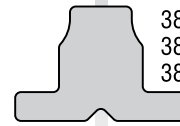
\*Includes M6 x 1.0 x 20 or 30 mm fasteners; weights include fasteners; not for flanged track. ‡For Selden mast section C installations.



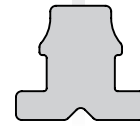
3844 Slug-mount track



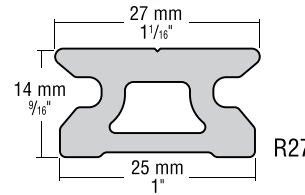
3845 Mounting kit  
3847 Endstop kit/pinstop  
3850 Endstop kit/fixd



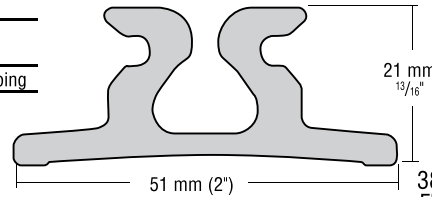
3846 Mounting kit  
3848 Endstop kit/pinstop  
3851 Endstop kit/fixd



3864 Mounting kit  
3865 Endstop kit/fixd  
3866 Endstop kit/pinstop



R27 Midrange traveler track



3849 Flanged track