

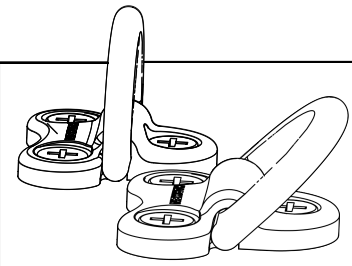
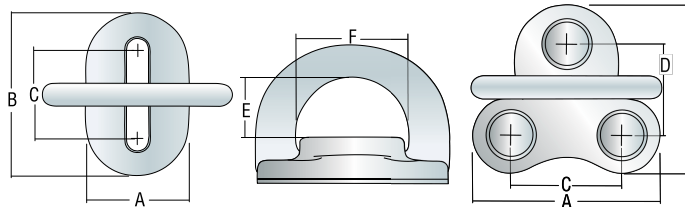
Folding Padeyes

Folding padeyes keep deck and passageways clear. They're ready to attach a snatch block or fender, but fold safely out of the way when not needed.

Bolt-down bases and D-rings are 316 stainless steel. A vulcanized thermoplastic pad prevents rattling and holds the D-ring in position.

Use for:

- Loops/soft attachments
- Jacklines and tethers
- Leads
- Tie downs
- Lifting points
- Fenders



FOLDING PADEYES Q&A

HOW SHOULD I ALIGN THE LOAD ON A FOLDING PADEYE?

Folding padeyes differ from conventional padeyes in that the load should be perpendicular to the hinge and bail instead of in line with it. The strongest positions are with the D-ring vertical or leaning toward the fold-down position, which focuses the load on the side anchored with two screws.

Part No.	Description	A		B		C		D		E		F		Weight oz g	Maximum working load lb kg	Breaking load lb kg	Fasteners (FH)				
		in	mm	in	mm	in	mm	in	mm	in	mm	in	mm								
3206	6 mm low-load	1	26	1 5/8	41.5	7/8	23	—	—	19/32	14.9	1 1/8	28	2 1/4	65	1760	800	3520	1600	1/4	6
3207	6 mm	1 7/8	47	1 5/8	42.25	1 1/8	28	15/16	23	19/32	14.9	1 1/8	28	2 3/4	78	3080	1400	6160	2800	1/4	6

Padeyes

Padeyes are great for mounting blocks and are also used as attachment points for staysails, reefing blocks, and hundreds of other items.

Harken offers a range of stainless steel padeyes. The diamond-shaped padeyes, 688 and 689, are 316 stainless and often used at mastbases where the diamond shape allows them to be mounted very close together. The 2759 is 316 cast stainless steel. The 627, 629, and 648 padeyes are 17-4 PH stainless.

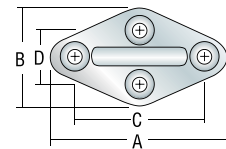
For maximum strength always align fixed padeye bails to the load.



627
648
629



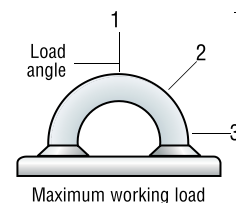
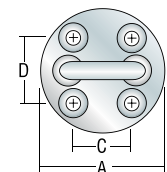
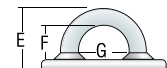
688



2759



689



Part No.	Maximum working load						Breaking load						Fasteners (FH)	
	1		2		3		1		2		3			
	lb	kg	lb	kg	lb	kg	lb	kg	lb	kg	lb	kg	in	mm
627	5000	2270	4500	2040	4300	1950	10000	4535	9000	4080	8600	3900	1/4	6
629	20000	9070	12000	5440	14000	6350	40000	18140	24000	10890	28000	12700	1/2	12
648	11800	5358	10375	4705	8500	3855	23600	10716	20750	9430	17000	7710	3/8	10
688	3800	1770	5000	2270	4300	1950	7800	3540	10000	4535	8600	3900	1/4	6
689	8500	3855	8000	3628	7800	3540	19000	8618	17200	7800	15600	7075	5/16	8
2759	2550	1156	—	—	2450	1111	5100	2313	—	—	4900	2222	1/4	6

Part No.	Description	A		B		C		D		E		F		G		Weight	
		in	mm	in	mm	in	mm	in	mm	in	mm	in	mm	in	mm	oz	g
627	Small round	2 1/4	57	—	—	1 1/16	27	1 3/16	30	1 3/16	30	5/8	16	1 3/16	24	4 1/4	118
629	Large round	3 3/4	95	—	—	1 3/4	44	1 7/8	48	2	51	1 1/16	27	1 3/4	44	23	652
648	High-load medium	3	76	—	—	1 5/16	33	1 1/16	40	1 15/16	50	1 1/8	29	1 1/16	37	11	312
688	Small diamond	3 1/8	79	2	51	2 3/8	60	1 1/4	32	1 3/16	30	3/16	14	7/8	22	43 1/4	135
689	Large diamond	3 3/8	98	2 5/16	59	2 1/8	73	1 3/8	35	1 1/16	40	7/8	22	1 1/16	27	7 1/2	213
2759	Round	2 1/4	56	3/4	18	1 1/2	38	—	—	1	26	9/16	15	5/8	16	1 3/8	38

DO NOT use Harken equipment for human suspension unless product is specifically certified and labeled for such use.