

CPX0 Vertical Windlass

Lewmar's CPX0 anchor windlass is aimed at the ever increasing number of smaller craft fitting powered units.

The CPX0 fills the gap at the smaller end of the CPX range for boats between 24ft and 36ft.

The CPX0 feature the tried and tested worm-wheel gearbox architecture and use quality materials throughout - hard anodised aluminium for the base and cast stainless steel for the gypsy top cap and chain pipe cover.

- Lightweight design
- Dual chain gypsy
- 500W or 700W motors
- Highly reliable gearbox design



Stainless steel chain pipe cover and gypsy cap

Lightweight cast aluminium base - hard anodised black



6/7mm, 1/4" dual chain and 8mm, 5/16" gypsy options

CPX0 Basic Windlass Kits

PART NUMBER	DESCRIPTION
66910422	500W 6mm-7mm-1/4" with Chain Counter Sensor
66910423	500W 6mm-7mm-1/4" no Sensor
66910424	500W 8mm-5/16" with Chain Counter Sensor
66910425	500W 8mm-5/16" no sensor
66910426	700W 6mm-7mm-1/4" with Chain Counter Sensor
66910427	700W 6mm-7mm-1/4" no sensor
66910428	700W 8mm-5/16" with Chain Counter Sensor
66910429	700W 8mm-5/16" no sensor

Basic windlass kit includes Deck unit, Motor gearbox, Solenoid and Gypsy

CPX0 Extended Windlass Kits

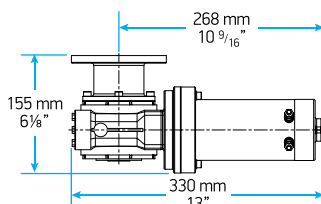
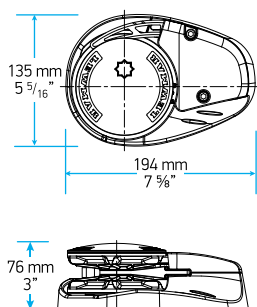
PART NUMBER	DESCRIPTION
66910437	500W 6mm-7mm-1/4" with Chain Counter Sensor and switch kit
66910438	500W 8mm-5/16" with Chain Counter Sensor and switch kit
66910439	700W 6mm-7mm-1/4" with Chain Counter Sensor and switch kit
66910440	700W 8mm-5/16" with Chain Counter Sensor and switch kit

Extended windlass kit includes Deck unit, Motor gearbox, Solenoid, Gypsy, Rocker switch and circuit breaker

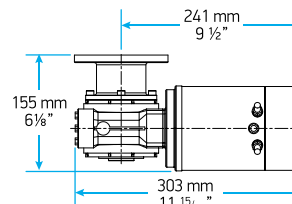
CPX0 Specifications

MODEL	MAX PULL		WORKING LOAD LIMIT		MAX LINE SPEED		NORMAL CURRENT DRAW Amp	CIRCUIT BREAKER Amp	APP WEIGHT GYPSY ONLY	
	kg	lb	kg	lb	m/min	ft/min			kg	lb
CPX0 - 500W/12V	410	900	103	226	14	46	75	70	9.2	20.2
CPX0 - 700W/12V	600	1320	150	330	15.5	51	105	90	17	37.4

Dimensions Diagram



500 W Motor



700 W Motor



1. Windlasses



CPX Gypsy/Drum

CPX Gypsy Only

CPX1/2/3 Complete Kit

PART NUMBER		MODEL	GYPSY NO- CHAIN DESCRIPTION	VOLTAGE
Gypsy Only	Gypsy Drum			
6671011006	-	CPX1	006- 6mm ISO 4565, 1/4" G40*, 1/4" BBB	12V
6671011000	-	CPX1	000- 7mm ISO 4565, 1/4" G40*, 1/4" BBB	12V
6671011001	-	CPX1	001- 8mm DIN 766, 8mm ISO 4565, 5/16" G40	12V
6672011006	6672021006	CPX2	006- 6mm ISO 4565, 1/4" G40*, 1/4" BBB	12V
6672011000	6672021000	CPX2	000- 7mm ISO 4565, 1/4" G40*, 1/4" BBB	12V
6672011001	6672021001	CPX2	001- 8mm DIN 766, 8mm ISO 4565, 5/16" G40	12V
6672011002	6672021002	CPX2	002- 10mm DIN 766, Campbell 3/8" S4	12V
6672011003	6672021003	CPX2	003- 10mm ISO, Campbell 3/8" S3, Lewmar 9.5mm G40	12V
6672012001	6672022001	CPX2	001- 8mm DIN 766, 8mm ISO 4565, 5/16" G40	24V
6672012002	6672022002	CPX2	002- 10mm DIN 766, Campbell 3/8" S4	24V
6672211000	6672221000	CPX3	000- 7mm ISO 4565, 1/4" G40*, 1/4" BBB	12V
6672211001	6672221001	CPX3	001- 8mm DIN 766, 8mm ISO 4565, 5/16" G40	12V
6672211002	6672221002	CPX3	002- 10mm DIN 766, Campbell 3/8" S4	12V
6672211003	6672221003	CPX3	003- 10mm ISO, Campbell 3/8" S3, Lewmar 9.5mm G40	12V
6672212001	6672222001	CPX3	001- 8mm DIN 766, 8mm ISO 4565, 5/16" G40	24V
6672212002	6672222002	CPX3	002- 10mm DIN 766, Campbell 3/8" S4	24V
6672212003	6672222003	CPX3	003- 10mm ISO, Campbell 3/8" S3, Lewmar 9.5mm G40	24V

Windlass Kit includes Deck unit, gypsy, Motor gearbox, rocker switch, circuit breaker and contactor

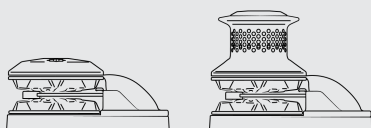
CPX1/2/3/4 Specifications

MODEL	MOTOR POWER Watt	MAX PULL		WORKING LOAD LIMIT		MAX LINE SPEED		NORMAL CURRENT DRAW Amp	CIRCUIT BREAKER Amp	APP WEIGHT GYPSY ONLY		APP WEIGHT GYPSY/DRUM	
		kg	lb	kg	lb	m/min	ft/min			kg	lb	kg	lb
CPX1 12V	700	454	1000	113	250	19	65	80	90	17.5	38.5		
CPX2 12V	700	650	1433	163	358	21	69	80	90	17.5	38.5	20.5	45.1
CPX2 24V	900	760	1675	180	396	24	79	45	50	17.5	38.5	20.5	45.1
CPX3 12V	1000	890	1962	215	473	28	92	85	110	20.0	44.0	23.0	50.6
CPX3 24V	1000	1020	2248	243	535	30	98	60	90	20.0	44.0	23.0	50.6
CPX4 12V	1600	1250	2750	313	688	25	82	125	150	26.5	58.3	33.5	73.7
CPX4 24V	2000	1500	3300	375	825	27	90	70	110	26.5	58.3	33.5	73.7

CPX1/2/3/4 Specify your Windlass

1 Deck Unit

Part No.	Description
69000493	CPX1 Gypsy only
69000480	CPX2/3 Gypsy only
69000483	CPX2/3 Gypsy Drum
69000494	CPX4 Gypsy only
69000495	CPX4 Gypsy Drum

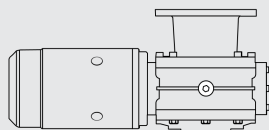


IP68 motor gearbox available for CPX2 & 3

- Water resistant unit won't be damaged even if submerged under water
- Robust composite IP68 Motor Case
- Compression cable clamps included
- No maintenance required
- Provide best motor protection against the elements

2 Motor Gearbox

PART NO.	DESCRIPTION
68001068	CPX1 - 12V
68001069	CPX2 - 12V
68001070	CPX2 - 24V
68001071	CPX3 - 12V
68001072	CPX3 - 24V
68001077	CPX4 - 12V
68001078	CPX4 - 24V



PART NO.	DESCRIPTION
68001073	CPX2 12v IP68 Motor Gearbox Assy - No Cables
68001074	CPX2 24v IP68 Motor Gearbox Assy - No Cables
68001075	CPX3 12v IP68 Motor Gearbox Assy - No Cables
68001076	CPX3 24v IP68 Motor Gearbox Assy - No Cables

3 Gypsy



PART NO.	GYPSY NUMBER	CHAIN DESCRIPTION	ROPE SIZE		ROPE DESCRIPTION	TO FIT WINDLASS
			mm	in		
68001047	006	6mm ISO 4565, 1/4" G40*, 1/4" BBB	12-14	1/2	3-strand and 8-plait	CPX1/2/3
68001048	000	7mm ISO 4565, 1/4" G40*, 1/4" BBB	12-14	1/2	3-strand and 8-plait	CPX1/2/3
68001049	001	8mm DIN 766, 8mm ISO 4565, 5/16" G40	12-16	1/2-5/8	3-strand and 8-plait (5/8 only)	CPX1/2/3
68001050	002	10mm DIN 766, Campbell 3/8" S4	12-16	1/2-5/8	3-strand and 8-plait (5/8 only)	CPX1/2/3
68001051	003	10mm ISO, Campbell 3/8" S3, Lewmar 9.5mm G40	16	5/8	3-strand and 8-plait	CPX1/2/3
68001063	201	8mm DIN 766, 8mm ISO 4565, 5/16" G40, 5/16" Campbell S4	12-14	1/2	3 strand hard lay up	CPX4
68001064	202	10mm DIN 766, 5/16" Campbell S3, 3/8" Campbell S4, 9.5mm G30	16	5/8	3 strand hard lay up	CPX4
68001065	203	10mm ISO 4565, 3/8" Campbell S3, Lewmar 9.5mm G40	16	5/8	3 strand hard lay up	CPX4
68001066	204	12mm ISO 4565, 13mm DIN 766	18-20	3/4	3 strand hard lay up	CPX4

*G40 = Grade 40 Short Link Chain

Switch kit and accessories

4 Circuit Breakers



PART NO.	DESCRIPTION	FIT WINDLASS
68000348	Circuit Breaker 50A	CPX2 24V
68000349	Circuit Breaker 90A	CPX1/2 12V - CPX3 24V
68000350	Circuit Breaker 110A	CPX3 12V CPX4 24V
68000351	Circuit Breaker 150A	CPX4 12V

5 Contactor



PART NO.	DESCRIPTION	CPX1	CPX2/3	CPX4
Sealed Contactors				
68000937	Compact Dual 12V	•	•	
68000938	Compact Dual 24V		•	
68000318	Dual 12V	•	•	
68000319	Dual 24V		•	
68000320	Dual 12V			•
68000321	Dual 24V			•
Contactors in Boxes				
68000129	Dual 12V	•	•	
68000130	Dual 24V		•	
18000200	Dual 12V			•
18000237	Dual 24V			•

6 Switches & Accessories

Refer to p34-38 for more information



Footswitches



Chain counters



Wireless remote control



1. Windlasses

CPX Vertical Windlass

7 Optional Accessories



Bulkhead Fittings
3 gland: 68000866

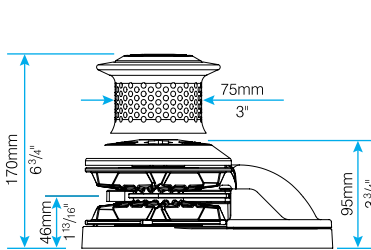


Manual recovery kit for CPX1/2/3
Gypsy only: 66840054
Gypsy/Drum: 66840056

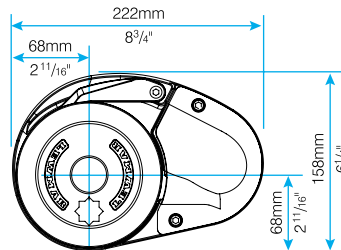


Manual Handle
29140017

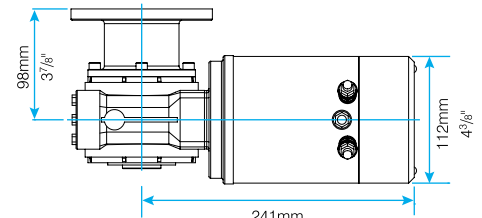
Dimensions Diagram CPX1/2/3



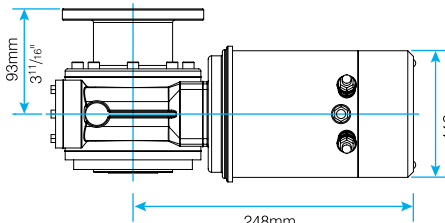
CPX1/2/3



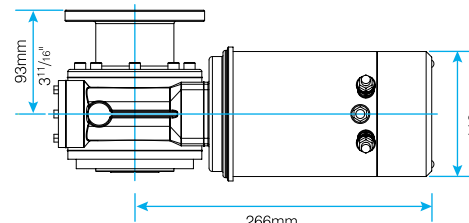
CPX1/2/3



CPX1 Motor Gearbox



CPX2 Motor Gearbox



CPX3 Motor Gearbox

Dimensions Diagram CPX4

