

Pro-Series + Pro-Fish Horizontal Windlasses

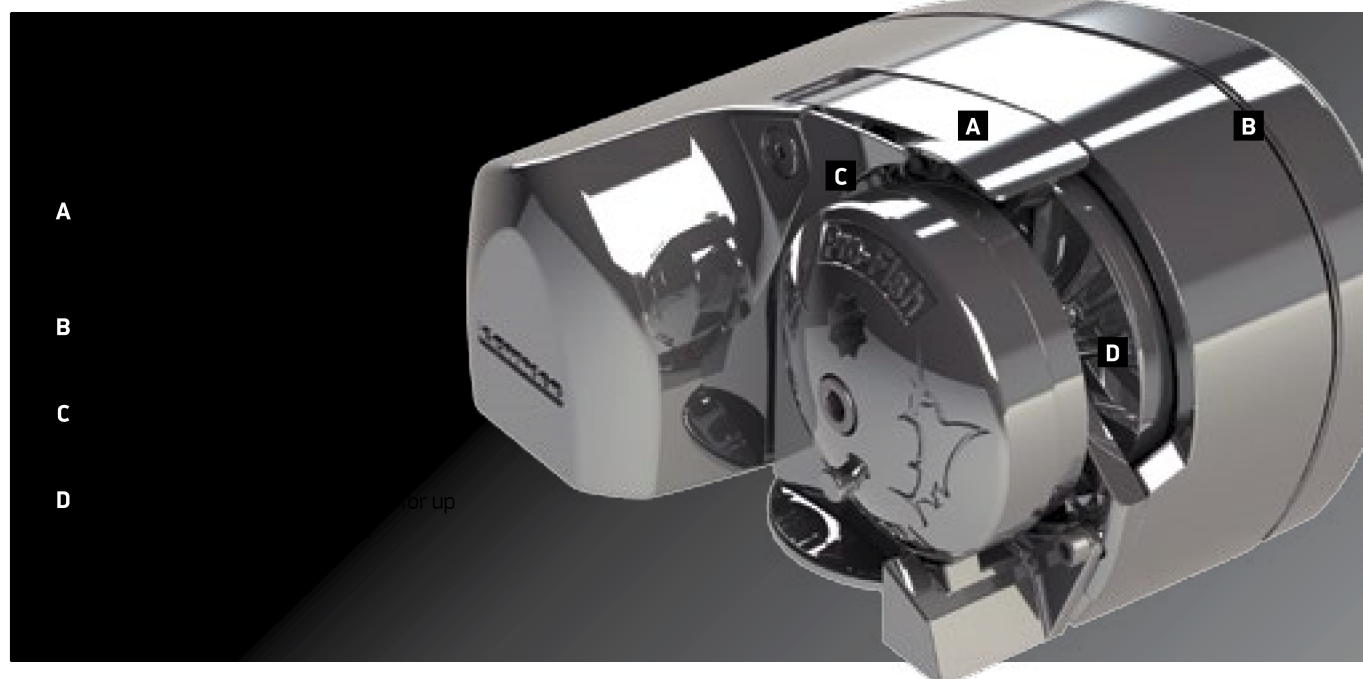
The Pro-Series and Pro-Fish sees a further update for 2013. Many customers have expressed a wish to mount a windlass on the stern for use with leaded line anchor rodes and the Pro-Fish Pb is ideal for that purpose. The redesigned control arm and new rope guard and gypsy work flawlessly with lead line and will also be available as an upgrade kit for existing Pro-Series windlasses.

- All stainless design
- Automatic freefall mechanism (Pro-Fish only)
- NEW guard optimises performance with rope
- NEW gypsy design for lead line applications
- Powerful motor providing fast line speed
- Manual emergency recovery equipped – all you need is a common 1/2" socket wrench

- Maximum pulling power: 320kg (700 lb) for the 700 and 454kg (1,000 lb) for the 1000
- Convenient above-deck installation
- 5-year warranty
- For boats up to 12m (38ft)
- Free Fall conversion kits
- DIY ready

The Pro-Fish Pb is perfectly suited to installation in the stern of a boat, where it can be utilised for easy Scandinavian style stern anchoring. The automatic free-fall mechanism means access to the windlass is not required to drop or retrieve anchor and the all stainless design is extremely resistant to corrosion.

The gypsy has been specially designed to suit leaded lines up to 16mm in diameter and a revised control arm and new Pro-Guard plate prevent the rope from jumping out of the windlass or snagging during operation





1. Windlasses

Pro-Series + Pro-Fish Horizontal Windlasses

Specifications

MODEL	MAX.CHAIN		MOTOR SUPPLY Voltage	MOTOR POWER Watt	MAXIMUM PULL		WORKING LOAD LIMIT		MAXIMUM LINE SPEED		NORMAL CURRENT DRAW Amp	CIRCUIT BREAKER Amp	WEIGHT	
	mm	in			kg	lb	kg	lb	m/min	ft/min			kg	lb
Pro-Series 700	7	1/4	12	500	320	700	79	175	32	105	35	50	8.5	19
Pro-Series 1000	8	5/16	12	700	454	1000	114	250	32	105	50	70	9.5	21
Pro-Fish 700	7	1/4	12	500	320	700	79	175	32	105	35	50	8.5	19
Pro-Fish 1000	8	5/16	12	700	454	1000	114	250	32	105	50	70	9.5	21

Pro-Series Kit

PART NO.	DESCRIPTION	GYPSY SPECIFICATIONS	
		Chain	Rope
6656011967-310	Pro-Series 700 Kit	6mm DIN 766, 7mm DIN 766, 1/4" ISO G4, 1/4" BBB	12mm (1/2") 3-strand and 8-plait
6657011967-311	Pro-Series 1000, 6-7mm (1/4") Kit	6mm DIN 766, 7mm DIN 766, 1/4" ISO G4, 1/4" BBB	12mm (1/2") 3-strand and 8-plait
6657011198-311	Pro-Series 1000, 8mm (5/16") Kit	8mm DIN 766, 5/16" BBB, 8mm ISO 4565	14-16mm (9/16-5/8") 3-strand and 8-plait (5/8 only)

Kits include: Windlass, base gasket seal, fast-mounting studs, installation wrench, circuit breaker, dual-direction solenoid and rocker switch.

Pro-Fish Windlass Kit

PART NO.	DESCRIPTION	GYPSY SPECIFICATIONS	
		Chain	Rope
6656211967-310	Pro-Fish 700 Kit	6mm DIN 766, 7mm DIN 766, 1/4" ISO G4, 1/4" BBB	12mm (1/2") 3-strand and 8-plait
6656411198-311	Pro-Fish 1000 Kit	8mm DIN 766, 5/16" BBB, 8mm ISO 4565	14-16mm (9/16-5/8") 3-strand and 8-plait (5/8 only)
6656411199-311	Pro-Fish PB	14-16 mm (9/16-5/8") Lead-core line	

Kits include: Windlass, base gasket seal, fast-mounting studs, installation wrench, circuit breaker, dual-direction solenoid and rocker switch

Pro-Fish Conversion Kit

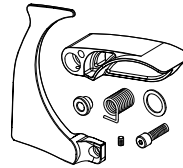
Converts Pro-Series to Pro-Fish



PART NO.	DESCRIPTION
66000616	Conversion Kit

Pro-Series/Fish Rope Guard and Control Arm Upgrade Kit

Compatible with all versions of Pro-Series and Pro-Fish units. However, windlasses fitted with a Ø118mm RC860 gypsy will need to replace the gypsy.



PART NO.	DESCRIPTION
66000766	Pro-Series/Fish Rope Guard and Control Arm Upgrade Kit

Pro-Fish PB Leaded Rope Gypsy Kit

Suits 14-16mm lead-core line

PART NO.	DESCRIPTION
66000768	Pro-Fish PB Gypsy Kit

Dimensions Diagram

