

## 5.5 Electric motor replacement

**⚠ Isolate the windlass electrically!**

Disconnect the Motor Cables from the vessel's wiring loom. Remove the Gear Train Cover (17) using a 4 mm (<sup>5</sup>/<sub>32</sub>" ) Allen Wrench as detailed above. Remove the 1st Compound Gear Assembly (16) and Teflon™ Flat Washers (14).

Using a 4 mm (<sup>5</sup>/<sub>32</sub>" ) Allen Wrench remove the Motor Screws (10). Withdraw the motor from the Main Case. Note that silicone is used to seal the holes in the case where the motor wires pass through. Be careful not to strip the insulation from the Motor Wires when pulling them through the Main Case.

Replace the Motor by reversing the above procedure, using fresh silicone to seal the wire holes in the case. Use Loctite® 2701 threadlock on the Motor Screws.

## 5.6 Pro-Fish conversion

Pro-Series units from Serial Number \*\*\*0603\*\*\* (March 2006) or later, can easily be converted to Pro-Fish units by removing the Clutch nut (1), Gypsy Cone (2), Drive Pins (28) & Screws (31) and fitting the Pro-fish conversion kit (66000616). Fully fitting instructions, tools & loctite are included in the kit.

# 6. Parts list

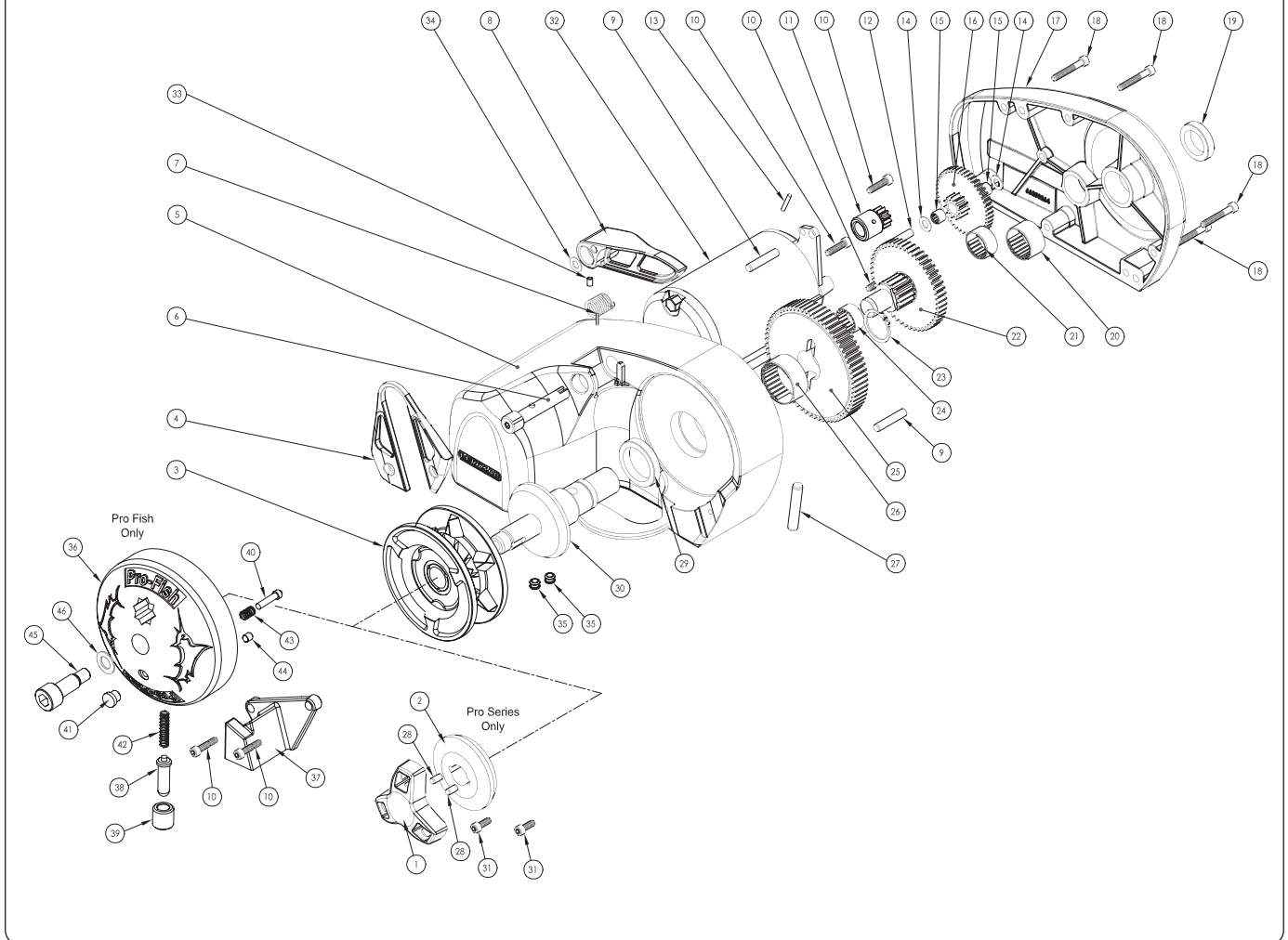
### 6.1 Parts list key Pro-Series & Pro-Fish models 700 & 1000

Item	Description	Qty.	Part No.
1	Clutch Nut	1	66000098
2	Gypsy Cone	1	66000098
3	Gypsy RC 7 mm (1/4")	1	66000110
3a	Gypsy RC 8 mm (5/16")	1	66000101
3b	Gypsy RC 5/16" G4	1	66000102
3c	Gypsy RC 6 mm	1	66000112
4	Stripper Arm	1	66000096
5	Maincase	1	N/A
6	Control Arm Pivot	1	66000097
7	Torsion Spring	1	66000097
8	Control Arm	1	66000097
9	Dowel 1/4" x 1 1/4"	3	66000104
10	Socket HD Cap Screw 10-24UNC x 3/4"	5	66000616 or 66000617 or 66000096 or 66000104 or 66000107
11	Motor Pinion	1	66000105 or 66000107
12	Dowel, 6 x 30 mm	1	66000104 or 66000107
13	Spirol Pin, 3 x 20 mm	1	66000104 or 66000105 or 66000107
14	Teflon Flat Washer	2	66000105
15	Needle Roller Bearing	2	66000103 or 66000105
16	1st Compound Gear	1	66000105
17	Gear Train Cover	1	66000109
18	Socket HD Cap Screw, 10-24UNC x 1 1/4"	6	66000104 or 66000109
19	Wiper Seal	1	66000104 or 66000109
20	Needle Roller Bearing	1	66000103 or 66000109
21	Needle Roller Bearing	1	66000103 or 66000109
22	2nd Compound Gear Assembly	1	66000105 or 66000106
23	External Clip	1	66000103 or 66000104 or 66000105

Item	Description	Qty.	Part No.
24	Roller Clutch	1	66000103
25	Mainshaft Gear	1	66000105
26	Needle Roller Bearing	1	66000103
27	Dowel, 8 x 45 mm	1	66000104 or 66000105
28	Drive Pins, 5 x 10 mm	2	66000098 or 66000104
29	Wiper Seal	1	66000104
30	Gypsy Drive Shaft	1	66000105
31	Socket Head Cap Screw, 10-24UNC x 1/2"	2	66000096 or 66000104
32	Powertek Motor 12 V	1	66000107
33	Grub Screw, 8-32 UNC x 1/4"	1	66000097
34	Pivot Pin Washer	1	66000097
35	Rubber Grommets	2	66000107
36	Pro-Fish Drive Cap	1	66000616 or 66000620
37	Pro-Fish Stopper Cam	1	66000616 or 66000617
38	Pro-Fish Plunger	1	66000616 or 66000620
39	Pro-Fish Plunger Housing	1	66000616 or 66000620
40	Pro-Fish Plunger Retaining Pin	1	66000616 or 66000620
41	Pro-Fish Plunger Retaining Cap	1	66000616 or 66000620
42	Pro-Fish Plunger Spring	1	66000616 or 66000620
43	Pro-Fish Retaining Spring	1	66000616 or 66000620
44	Grub Screw, 8-32 UNC x 3/16"	1	66000616 or 66000620
45	Shoulder Screw	1	66000616 or 66000620
46	Pro-Fish Drive Cap Spacer	1	66000616 or 66000620
47*	Base Mat	1	66000100 or 66000108
48a*	Mounting Stud, Washer & Nut (Imperial)	1	66000100
48b*	Mounting Stud Washer and Nut (Metric)	1	66000108

\* Not shown on exploded drawing

### 6.1.1 Parts list



### 6.2 Pro-Series & Pro-Fish models 700 & 1000 service kits

Service Kit	Description	Items Included (Qty)
66000096	Pro-Series Stripper Arm Kit	4(1), 10(2), 31(2)
66000097	Control Arm Kit	6(1), 7(1), 8(1), 33(1), 34(1)
66000098	Pro-Series Clutch Nut & Cone Kit	1(1), 2(1), 28(2)
66000099	Clutch Lever	Clutch Lever (1)
66000100	Fastening Kit (Imperial)	47(1), 48a(1)
66000101	Gypsy RC 8 mm (5/16")	3a(1)
66000102	Gypsy RC 5/16" G4	3b(1)
66000103	Bearings Kit	15(20), 20(1), 21(1), 23(1), 24(1), 26(1)
66000104	Pro-Series Seals and Screw Kit	10(5), 12(1), 13(1), 18(6), 19(1), 23(1), 9(3), 27(1), 28(2), 29(1), 31(2)
66000105	Gears and Shaft Kit	11(1), 13(1), 14(2), 15(2), 16(1), 22(1), 23(1), 25(1), 27(1), 30(1)
66000106	Compound Gear Kit	22(1)
66000107	Motor 12 V	11(1), 32(1), 10(3), 12(1), 13(1), 35(2)
66000108	Fastening Kit (Metric)	47(1), 48b(1)
66000109	Gear Train Cover Kit	17(1), 18(6), 19(1), 20(1), 21(1)
66000110	Gypsy RC 7 mm (1/4")	3(1)
66000112	Gypsy RC 6 mm	3c(1)
66000616	Pro-Fish Conversion Kit	36(1), 37(1), 38(1), 39(1), 40(1), 41(1), 42(1), 43(1), 44(1), 45(1), 46(1), 10(2)
66000617	Pro-Fish Stopper Kit	37(1), 10(2)
66000620	Pro-Fish Drive Cap Assembly Kit	36(1), 38(1), 39(1), 40(1), 41(1), 42(1), 43(1), 44(1), 45(1), 46(1)